

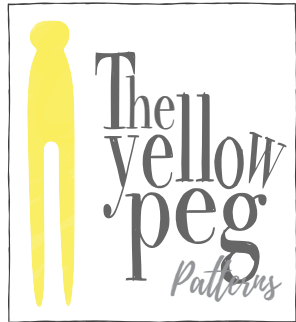


Centro die

drittofi

Posiziona su

2



Mantella

dietro (TG. 86)



taglia 1 sulla piega



Margine di cucitura: 1.5 cm

1

2



3



4



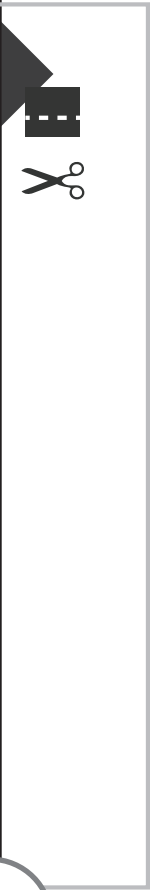
drittofilo



Mantella
davanti (TC. 86)
taglia 2
Margine di cucitura: 1,5 cm



5

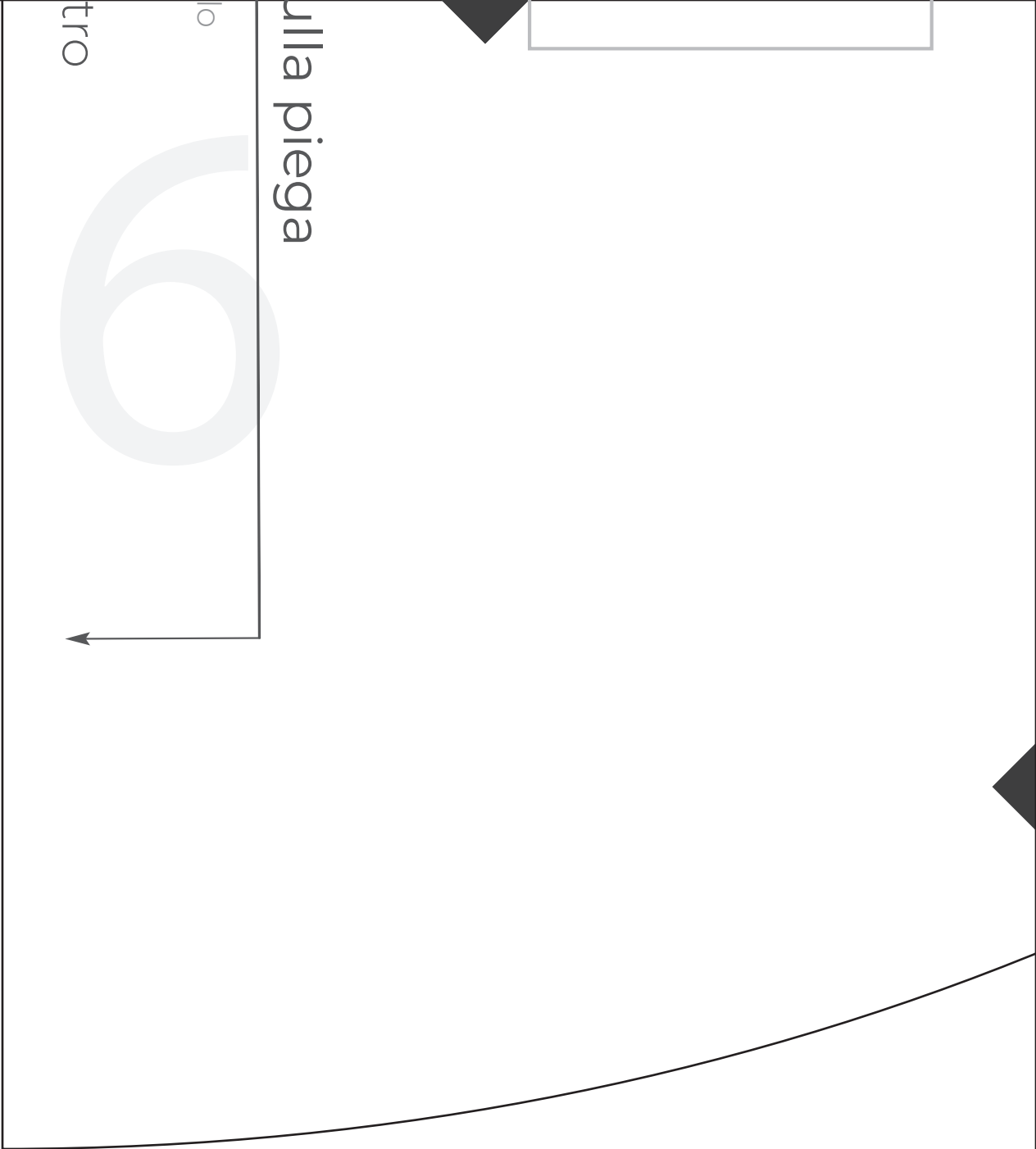




ulla piega

o

tro



7



8

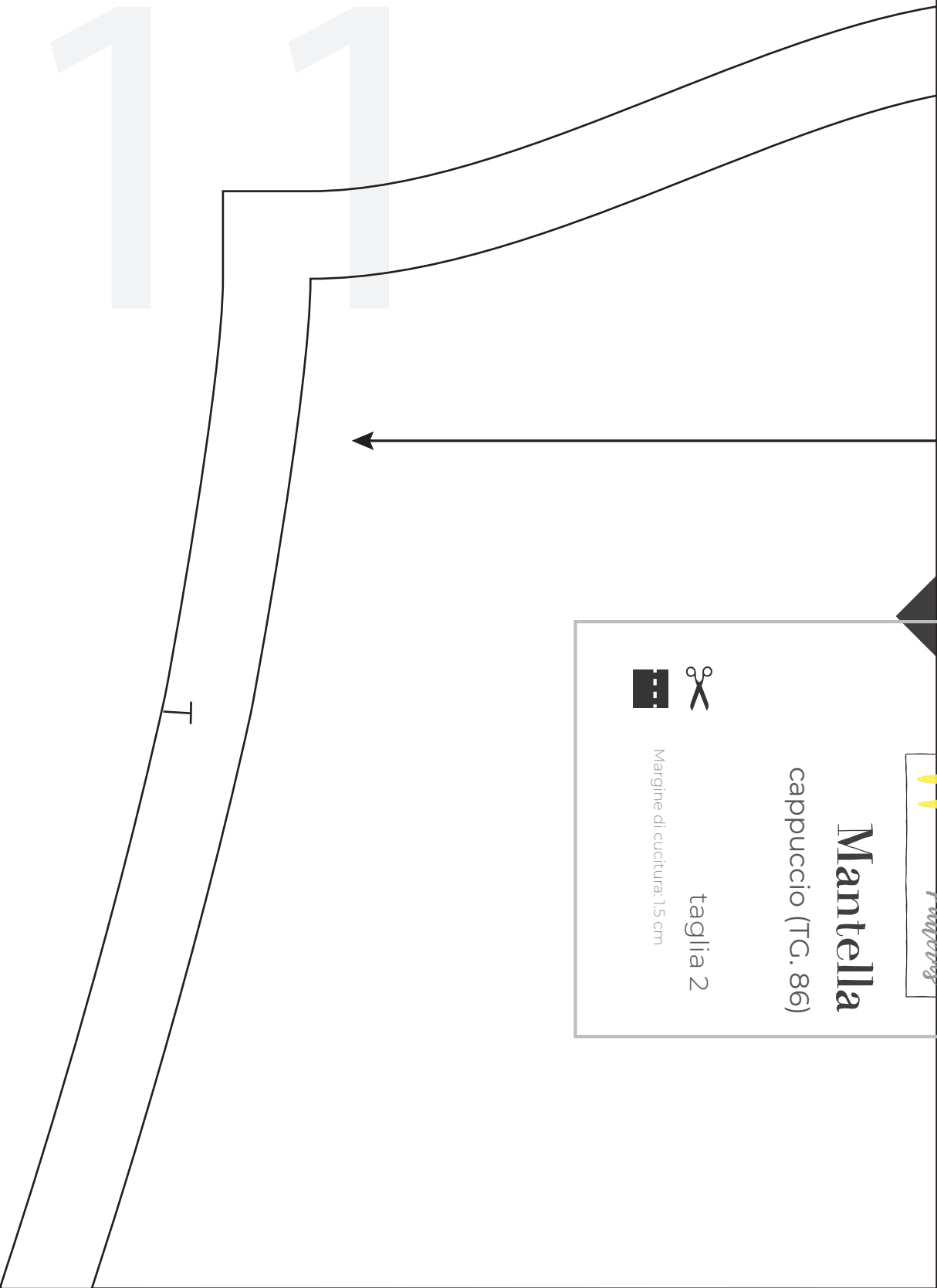
9



T

10

T



capuccio

Mantella

capuccio (TG. 86)

taglia 2

Margine di cucitura: 1,5 cm



12

drittofilo

3



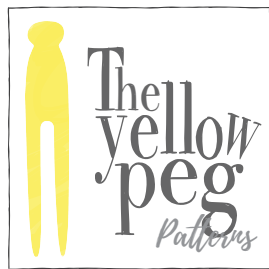
13





Centro dietro

Posiziona sulla piega

1



Gilet allacciato dietro (TG. 86)

 taglia 1 sulla piega
 Margine di cucitura: 1 cm

14

drittofilo

2



Gilet allacciato

davanti (TC. 86)



Margine di cucitura: 1 cm

taglia 2

